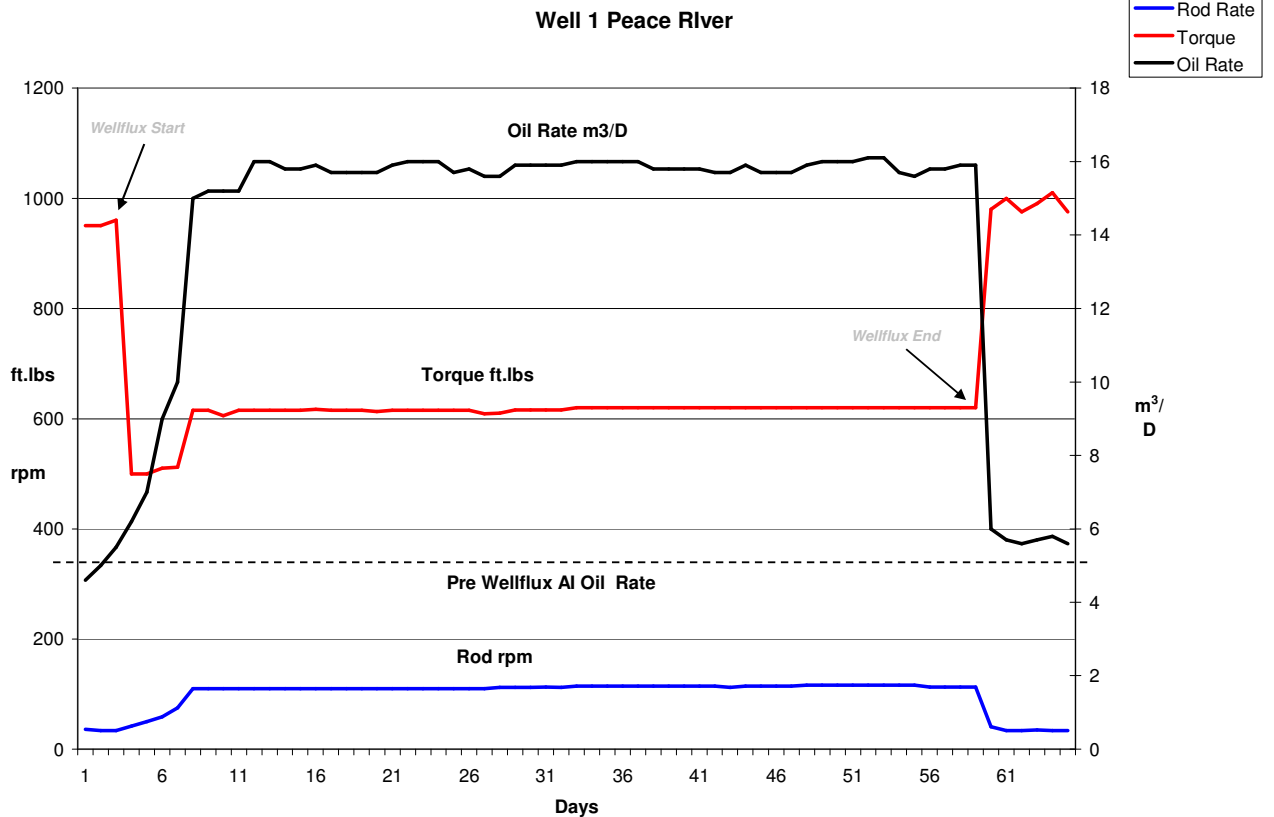


## Wellflux AI Case Histories

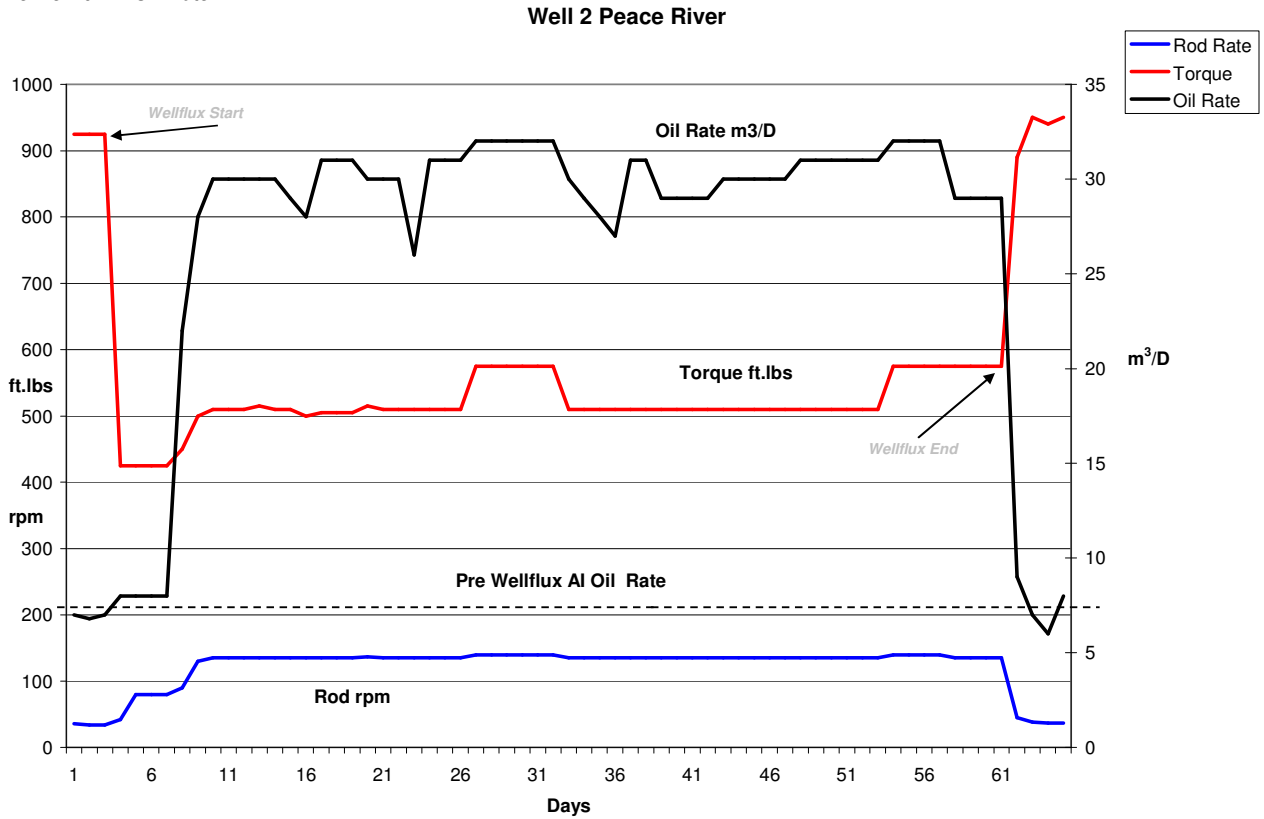
These case histories were performed on wells in Alberta with a number of different operators. Further details can be provided on request to [info@oilflowsolutions.com](mailto:info@oilflowsolutions.com) or by calling our Calgary office on (403) 648 4959

<b>Well 1 Peace River</b>		
	<b>Pre Wellflux</b>	<b>Wellflux</b>
<b>Well Type</b>	Horizontal	Horizontal
<b>Pump Type</b>	Progressive Cavity	Progressive Cavity
<b>Oil Rate</b>	5.5m <sup>3</sup> /D	15.2m <sup>3</sup> /D
<b>API</b>	9	9
<b>Fluid Viscosity @ Well Head</b>	98,000	150 - 250 cP
<b>Water Rate</b>	5%BS&W	5%BS&W
<b>Solids</b>	Trace	Trace
<b>Torque / Hydraulic Pressure</b>	950 ft-lbs	609 ft-lbs
<b>Polished Rod rpm</b>	36	109
<b>Net Oil Increase</b>	NA	182%

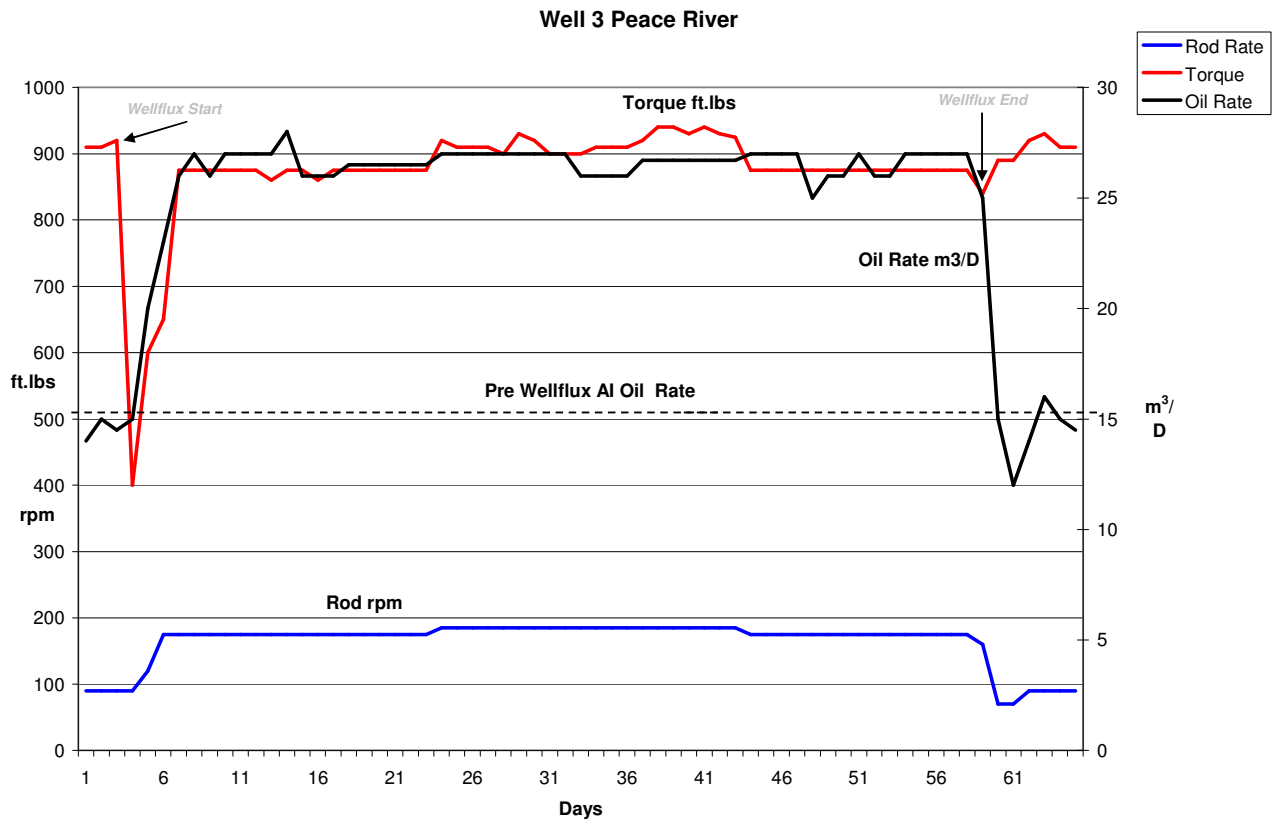


Well 2 Peace River		
	Pre Wellflux	Wellflux
Well Type	Horizontal	Horizontal
Pump Type	Progressive Cavity	Progressive Cavity
Oil Rate	7m3/D	29m3/D
API	9	9
Fluid Viscosity @ Well Head	78,000 cP	150 - 250 cP
Water Rate	5%BS&W	5%BS&W
Solids	Trace	Trace
Torque / Hydraulic Pressure	925 ft-lbs	520 ft-lbs
Polished Rod rpm	34	131
Net Oil Increase	NA	308%

Pre Wellflux AI Oil Rate

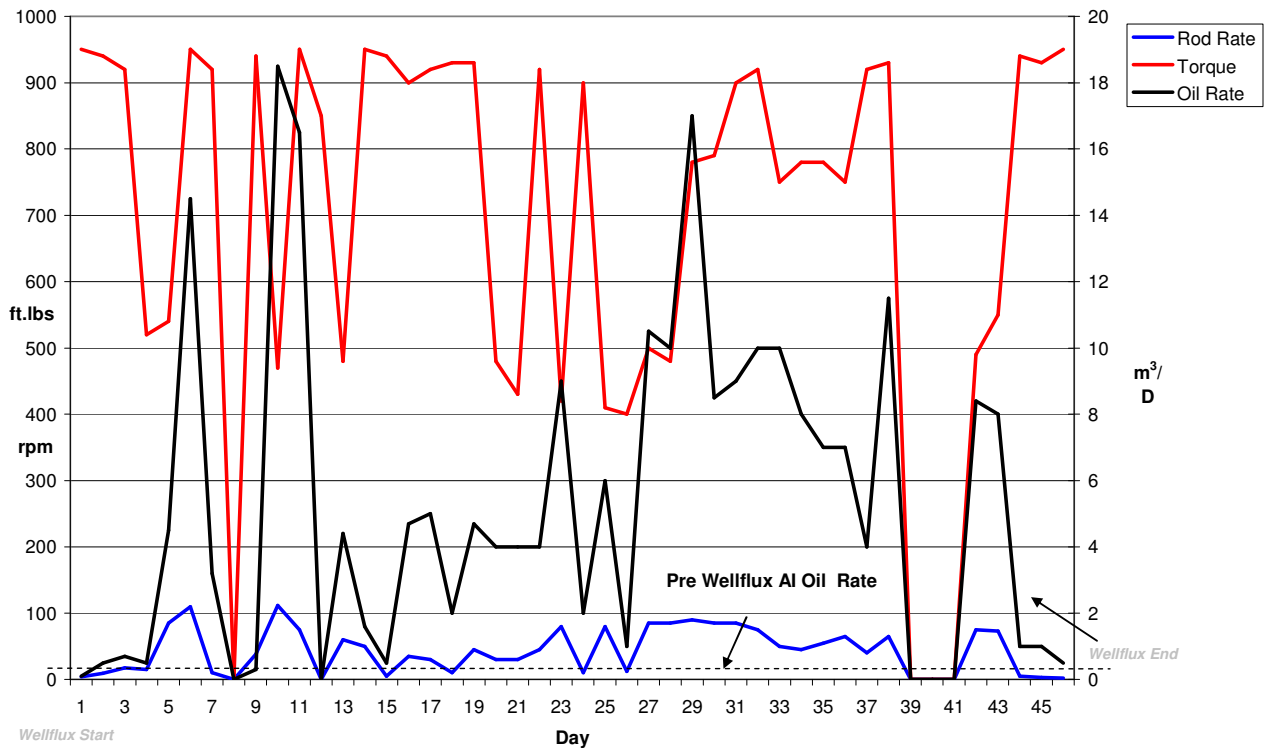


Well 3 Peace River		
<b>Well Type</b>	Pre Wellflux Horizontal	Wellflux Horizontal
<b>Pump Type</b>	Progressive Cavity	Progressive Cavity
<b>Oil Rate</b>	15m3/D	26m3/D
<b>API</b>	9	9
<b>Fluid Viscosity @ Well Head</b>	75,000 cP	200 - 300 cP
<b>Water Rate</b>	10% BS&W	10% BS&W
<b>Solids</b>	Trace	Trace
<b>Torque / Hydraulic Pressure</b>	910 ft-lbs	870 ft-lbs
<b>Polished Rod rpm</b>	90	175
<b>Net Oil Increase</b>	NA	78%

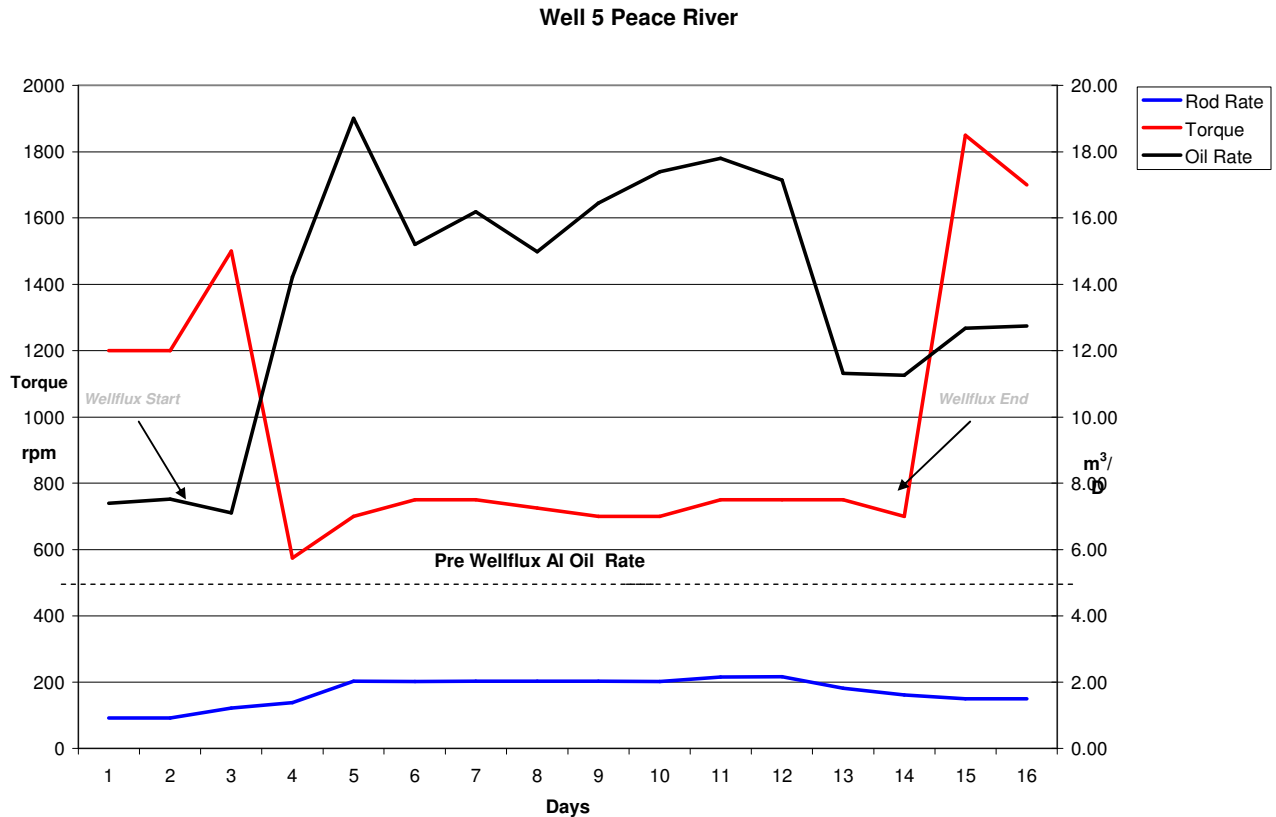


Well 4 Peace River		
<b>Well Type</b>	Pre Wellflux Horizontal	Wellflux Horizontal
<b>Pump Type</b>	Progressive Cavity	Progressive Cavity
<b>Oil Rate</b>	0.5m3/D	5m3/D
<b>API</b>	8	8
<b>Fluid Viscosity @ Well Head</b>	165,000 cP	150 - 350 cP
<b>Water Rate</b>	2% BS&W	2% BS&W
<b>Solids</b>	Trace	Trace
<b>Torque / Hydraulic Pressure</b>	950 ft-lbs	660 ft-lbs
<b>Polished Rod rpm</b>	1	49
<b>Net Oil Increase</b>	NA	1099%

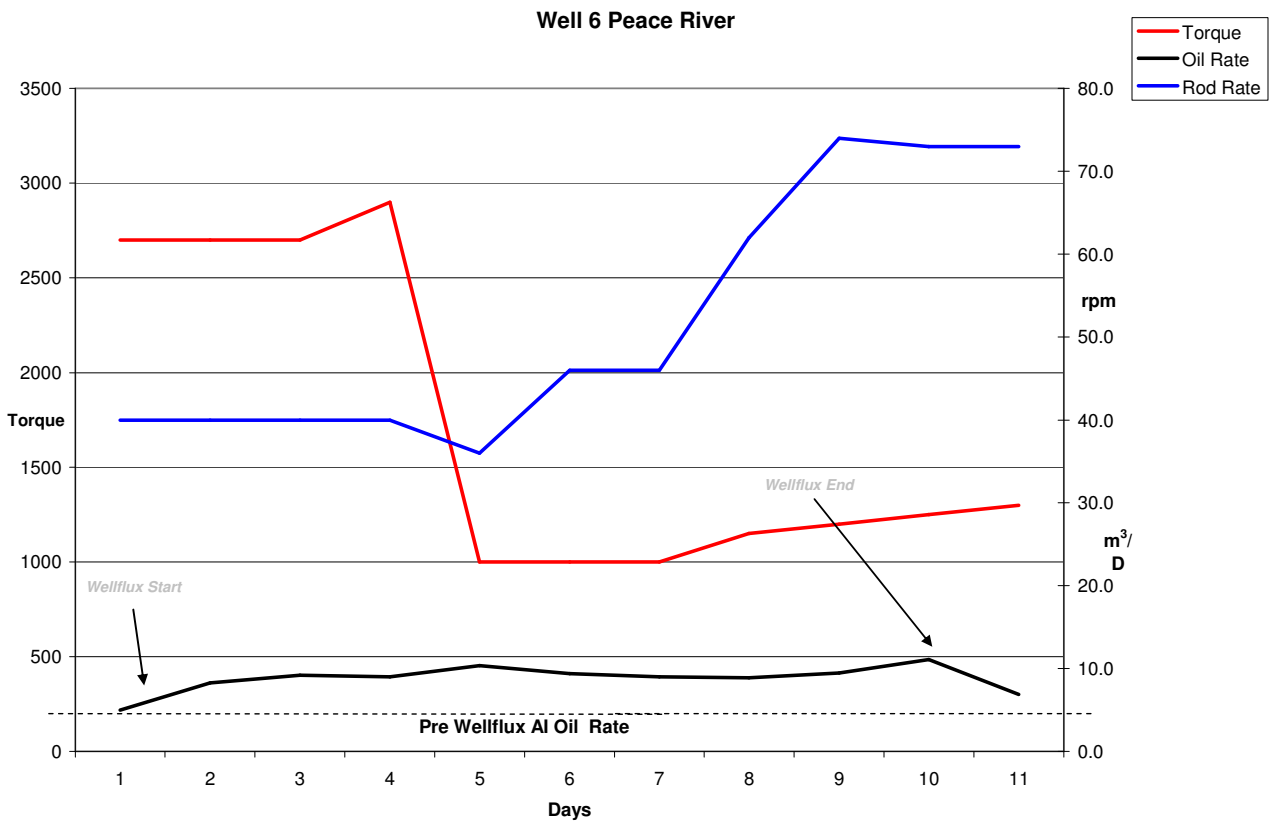
Well 4 Peace River



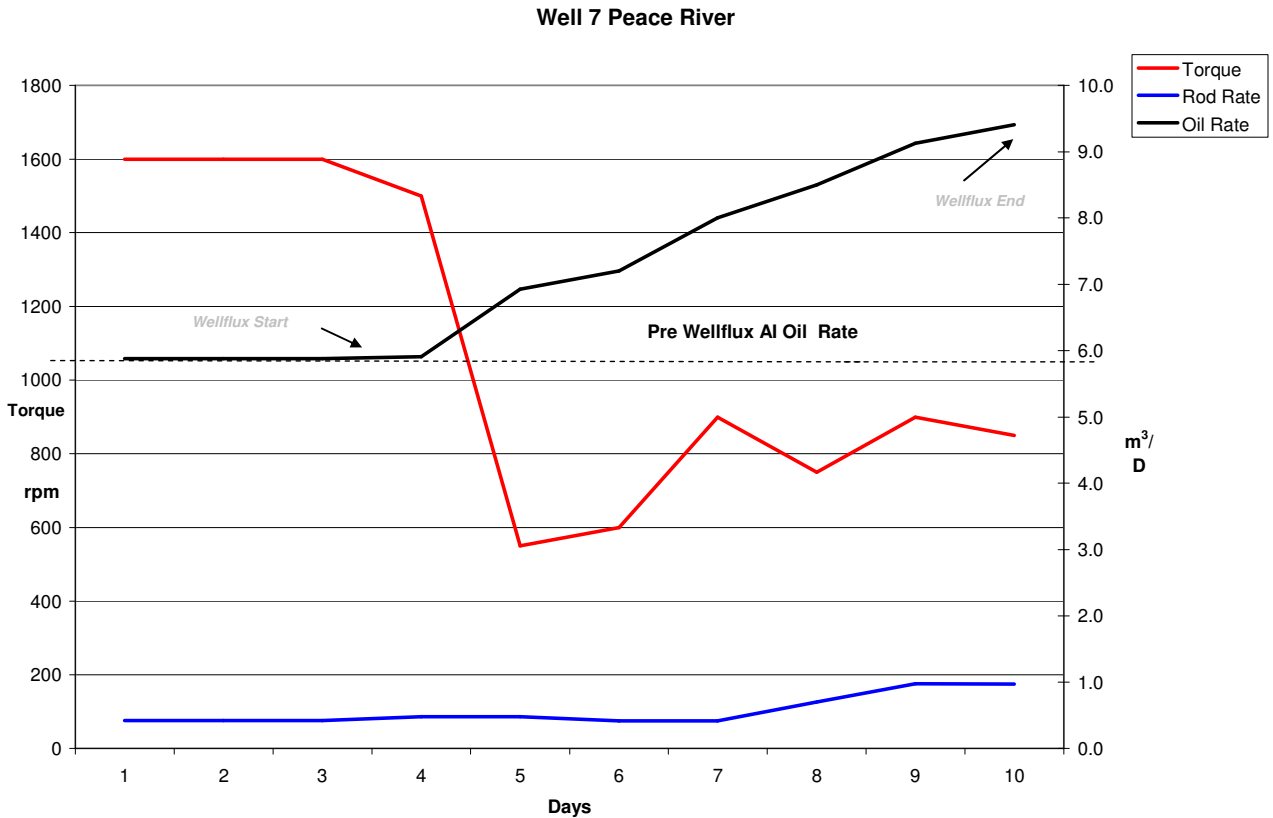
Well 5 Peace River		
	Pre Wellflux	Wellflux
Well Type	Horizontal	Horizontal
Pump Type	Progressive Cavity	Progressive Cavity
API	10	10
Fluid Viscosity @ Well Head	39,000 cP	150 -500 cP
Oil Rate	7.4m3/D	15.7m3/D
Water Rate	1m3/D	1m3/D*
Solids	Trace	Trace
Torque / Hydraulic Pressure	940	714
Polished Rod rpm	92	199
Net Oil Increase	NA	120%



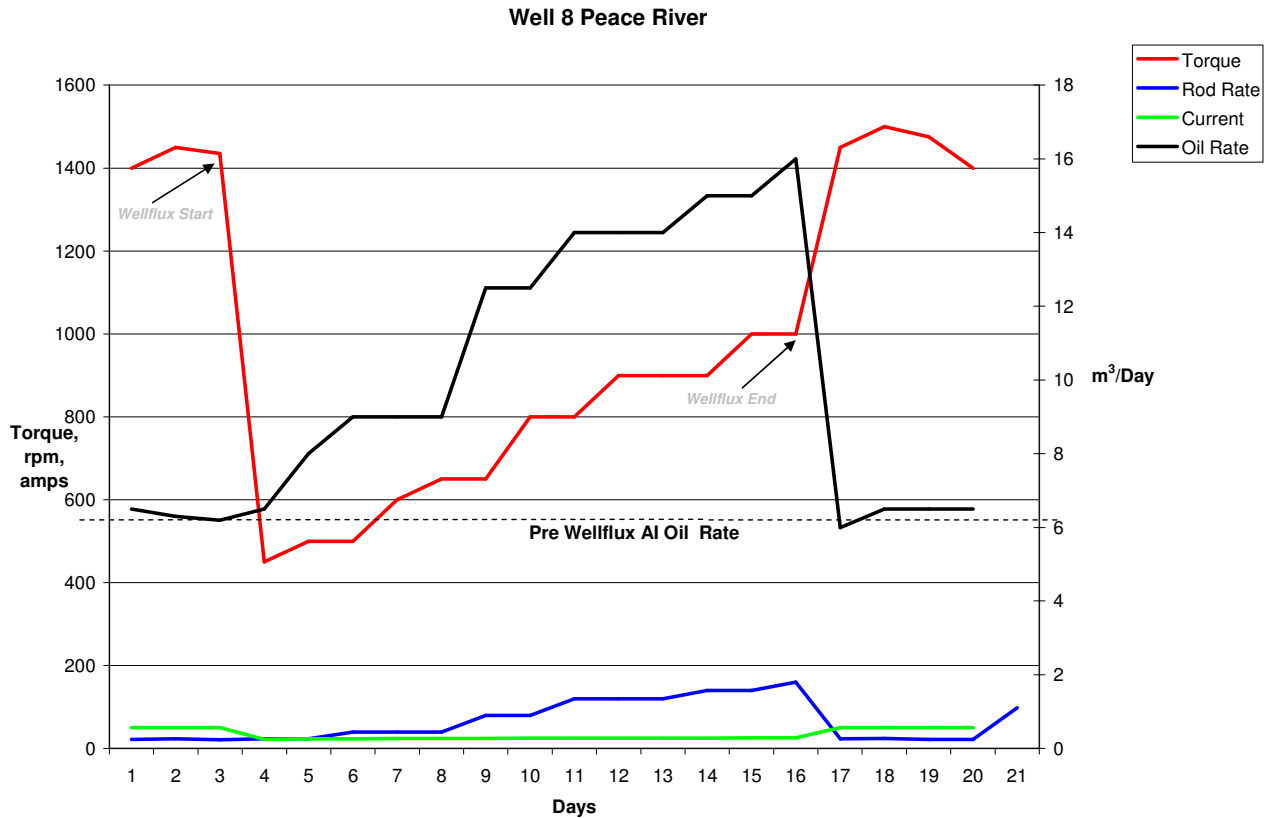
Well 6 Peace River		
<b>Well Type</b>	Pre Wellflux Horizontal	Wellflux Horizontal
<b>Pump Type</b>	Progressive Cavity	Progressive Cavity
<b>API</b>	9	9
<b>Fluid Viscosity @ Well Head</b>	160,000 cP	200 - 500 cP
<b>Oil Rate</b>	6m <sup>3</sup> /D	9.4m <sup>3</sup> /D
<b>Water Rate</b>	1.1m <sup>3</sup> /D	1.1m <sup>3</sup> /D*
<b>Solids</b>	Trace	Trace
<b>Torque / Hydraulic Pressure</b>	2700	1525
<b>Polished Rod rpm</b>	40	58
<b>Net Oil Increase</b>	NA	59%



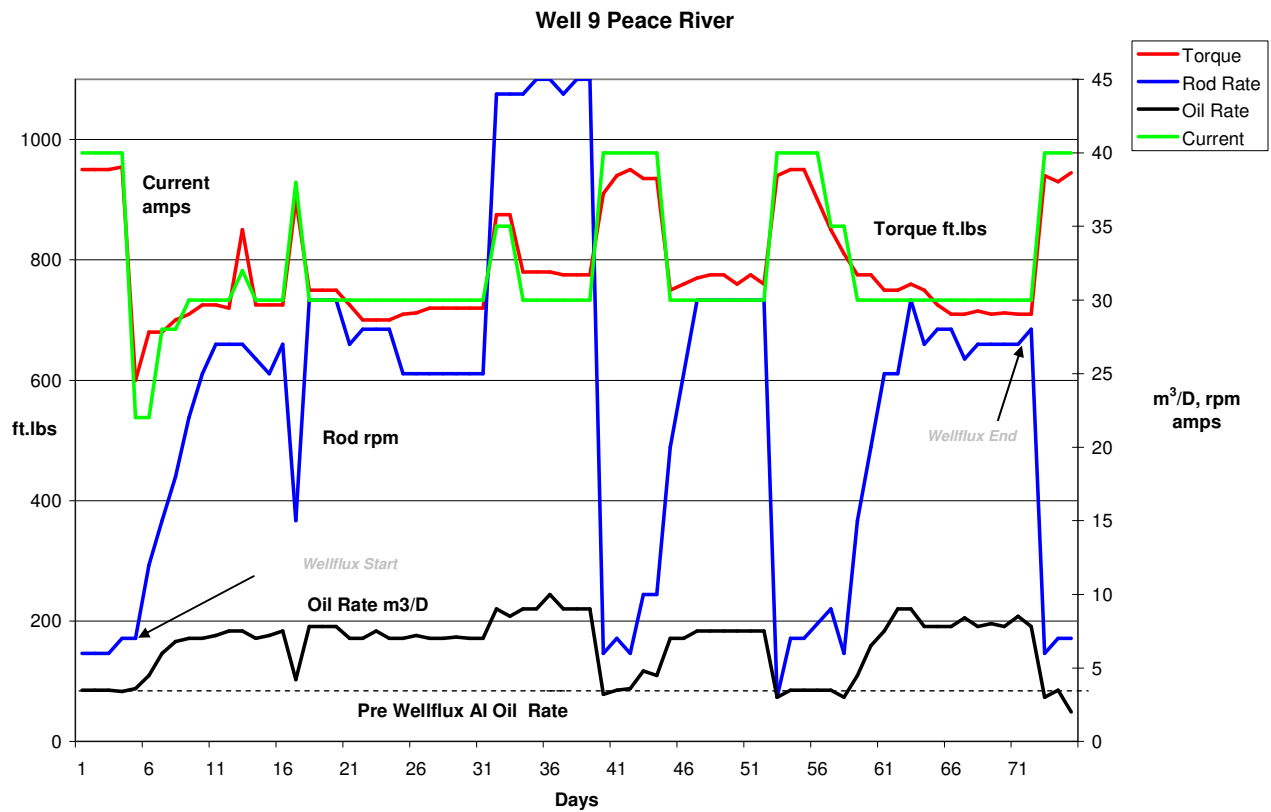
Well 7 Peace River		
	Pre Wellflux	Wellflux
Well Type	Horizontal	Horizontal
Pump Type	Progressive Cavity	Progressive Cavity
API	10	10
Fluid Viscosity @ Well Head	49,000	200 cP
Oil Rate	7.4m <sup>3</sup> /D	15.7m <sup>3</sup> /D
Water Rate	1m <sup>3</sup> /D	1m <sup>3</sup> /D*
Solids	Trace	Trace
Torque / Hydraulic Pressure	1490	714
Polished Rod rpm	92	199
Net Oil Increase	NA	120%



Well 8 Peace River		
Well Type	Pre Wellflux Horizontal	Wellflux Horizontal
Pump Type	Progressive Cavity	Progressive Cavity
API	10	10
Fluid Viscosity @ Well Head	135,000	100 -200 cP
Oil Rate	6.6m3/D	12.25m3/D
Water Rate	>1%BS&W	>1%BS&W
Solids	Trace	Trace
Torque / Hydraulic Pressure	1360 ft-lbs	655 ft-lbs
Polished Rod rpm	22	98
Net Oil Increase	NA	83%



Well 9 Peace River		
<b>Well Type</b>	Pre Wellflux Horizontal	Wellflux Horizontal
<b>Pump Type</b>	Progressive Cavity	Progressive Cavity
<b>Oil Rate</b>	7.4m <sup>3</sup> /D	15.7m <sup>3</sup> /D
<b>API</b>	10	10
<b>Fluid Viscosity @ Well Head</b>	110,000	100 - 400 cP
<b>Water Rate</b>	>1%BS&W	>1%BS&W
<b>Solids</b>	Trace	Trace
<b>Torque / Hydraulic Pressure</b>	954 ft-lbs	704 ft-lbs
<b>Polished Rod rpm</b>	7	45
<b>Net Oil Increase</b>	NA	98%



Well 10 Peace River		
<b>Well Type</b>	Pre Wellflux Horizontal	Wellflux Horizontal
<b>Pump Type</b>	Progressive Cavity	Progressive Cavity
<b>Oil Rate</b>	0.5m <sup>3</sup> /D	5m <sup>3</sup> /D
<b>API</b>	8	8
<b>Fluid Viscosity @ Well Head</b>	165,000 cP	150 - 750 cP
<b>Water Rate</b>	2% BS&W	2% BS&W
<b>Solids</b>	Trace	Trace
<b>Torque / Hydraulic Pressure</b>	940 ft-lbs	737 ft-lbs
<b>Polished Rod rpm</b>	2	48
<b>Net Oil Increase</b>	NA	883%

